

Instrumental insemination of honey bee queens

Jernej Bubnič, Agricultural Institute of Slovenia

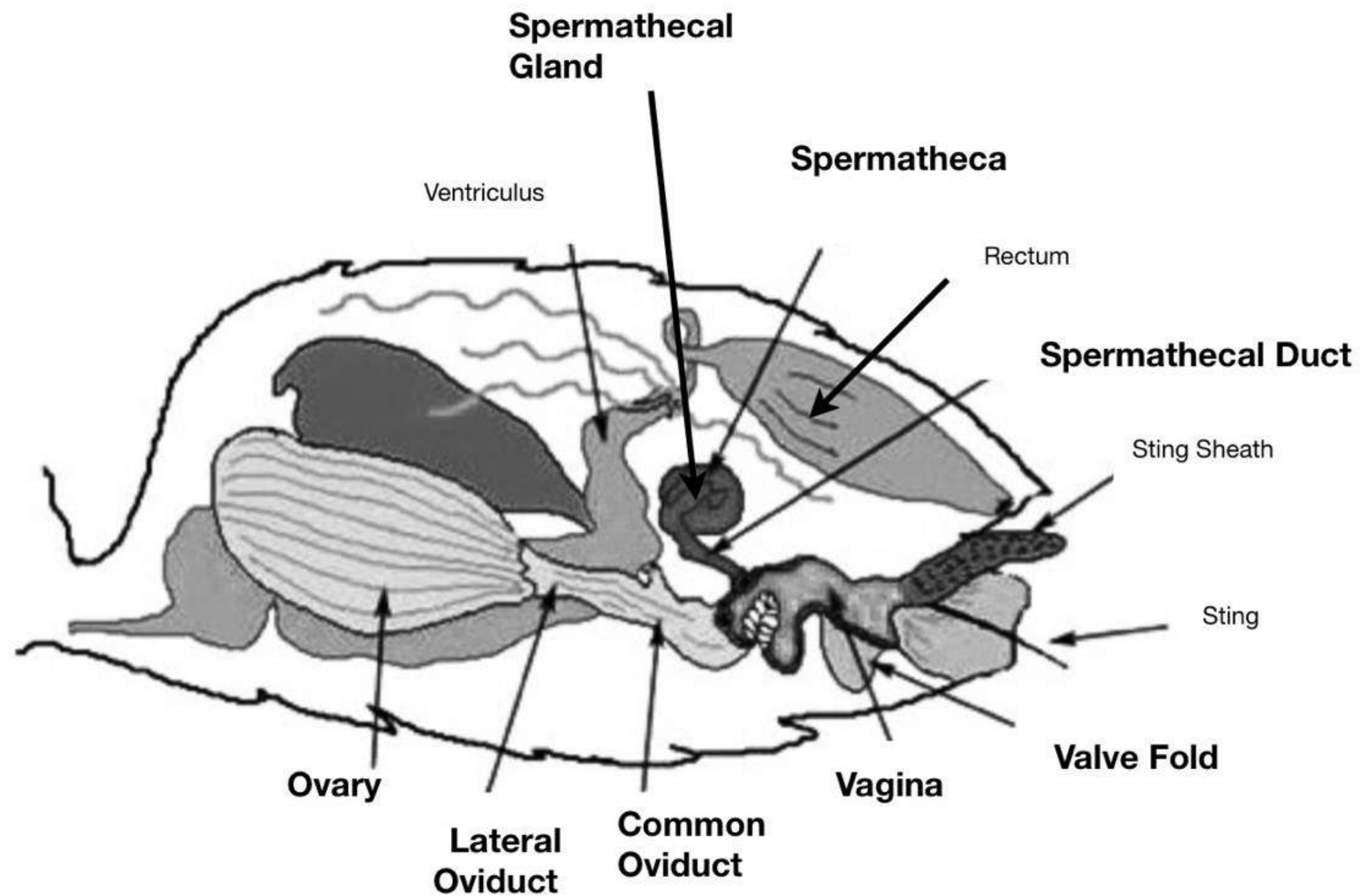
jernej.bubnic@kis.si

www.cost-insectimp.eu | info@cost-insectimp.eu

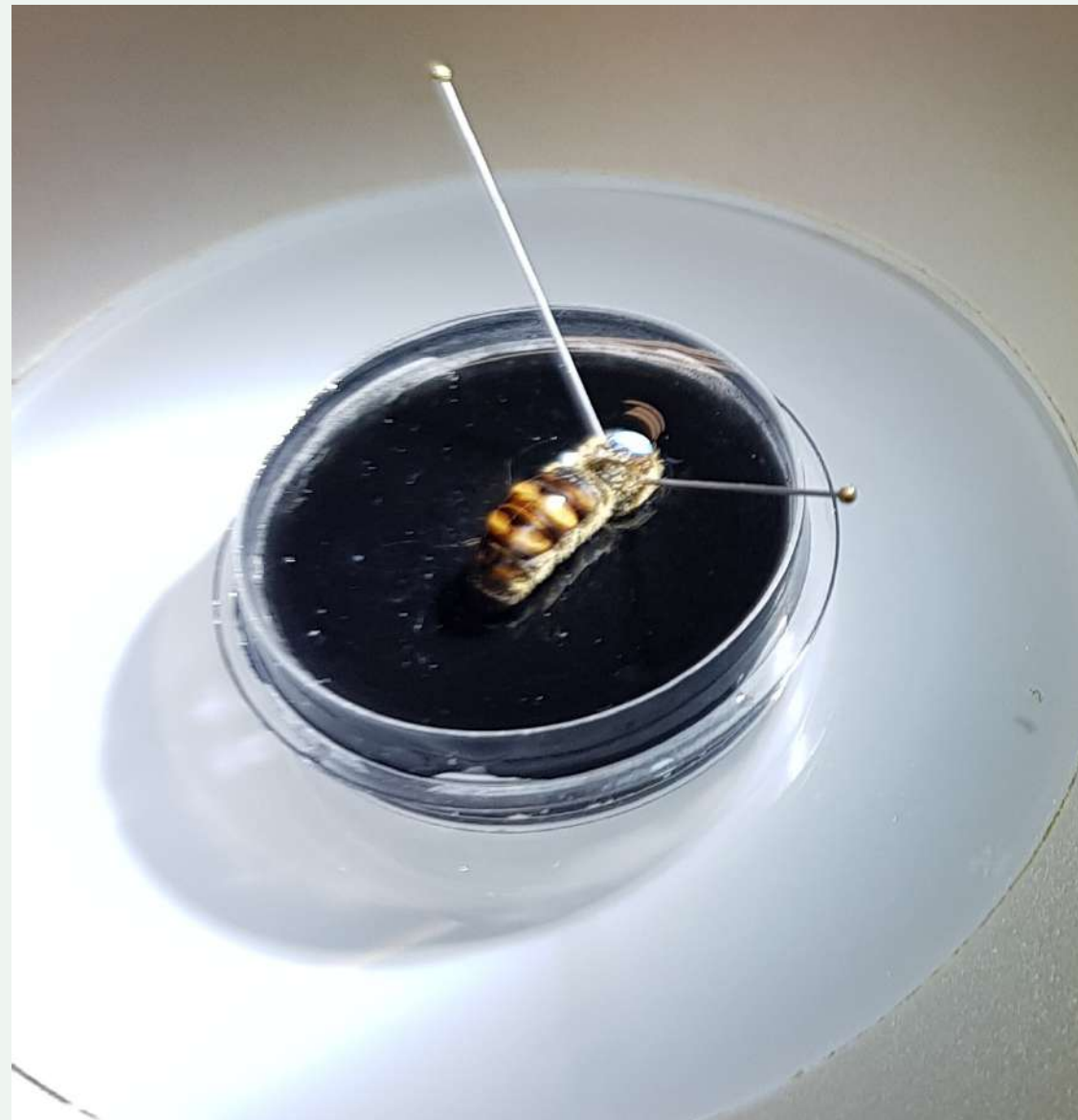
Why?

- The only way to guarantee full control over mating
- Breeding and science

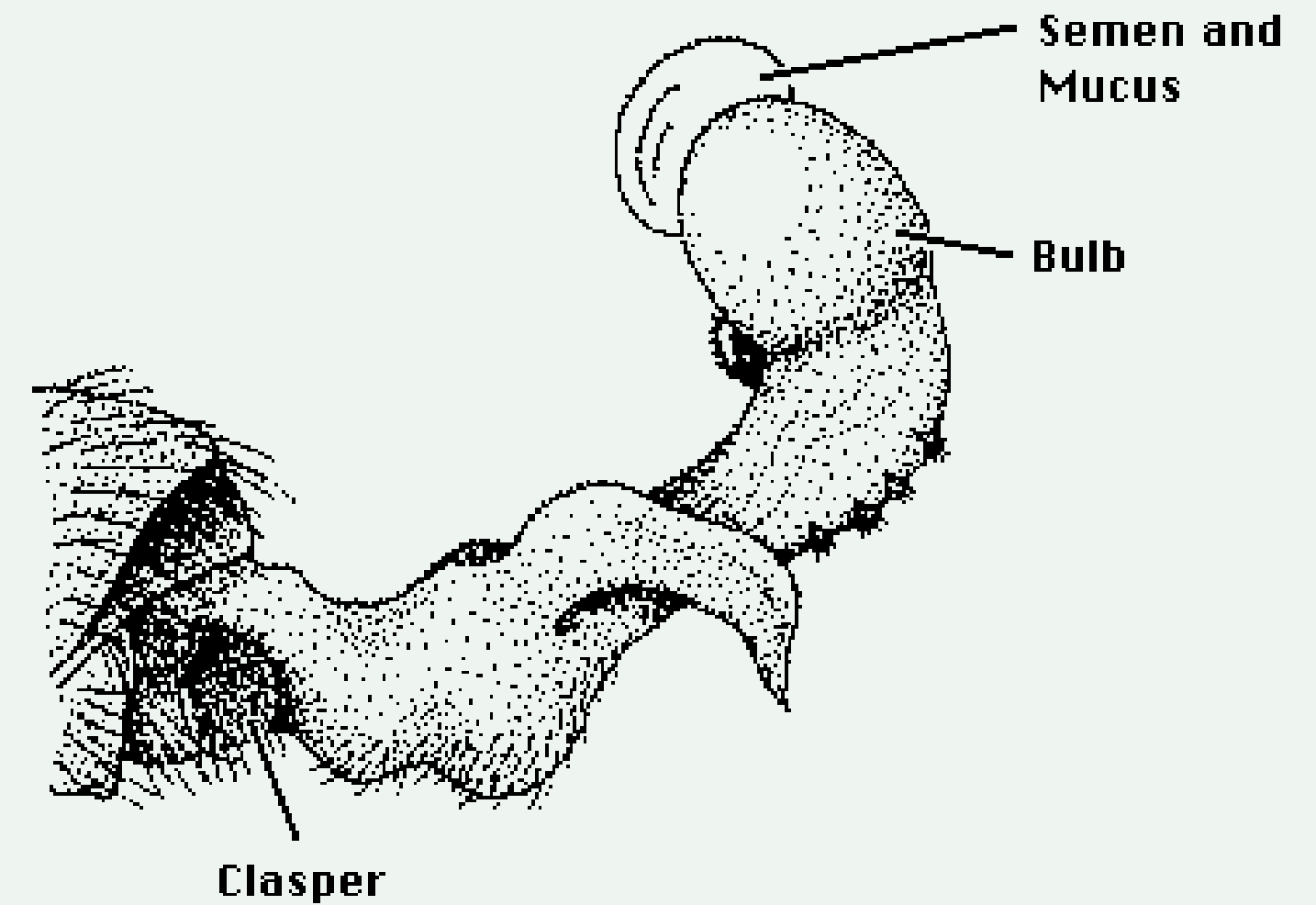
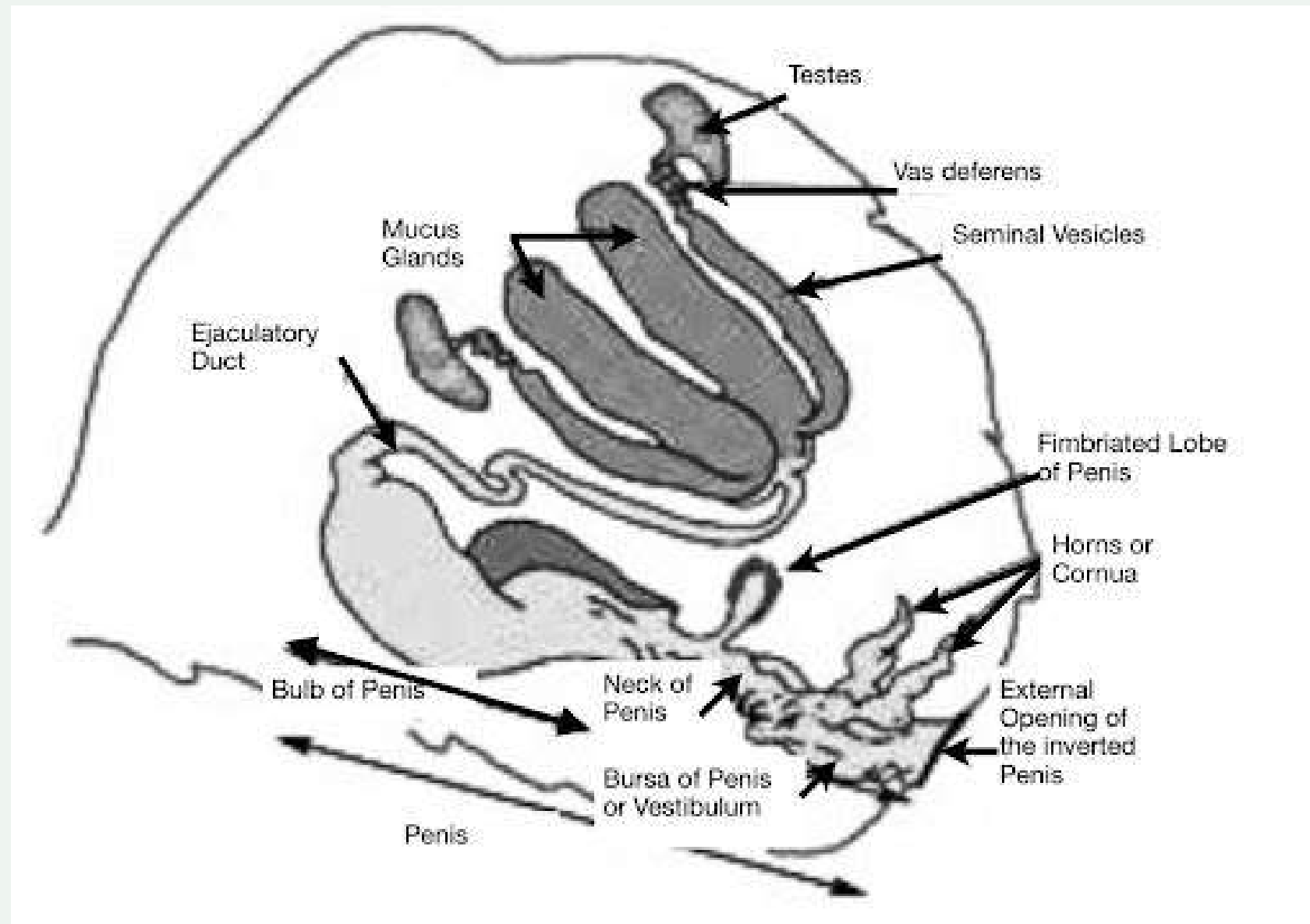
Anatomy: queens



Anatomy: queens



Anatomy: drones



Anatomy: drones

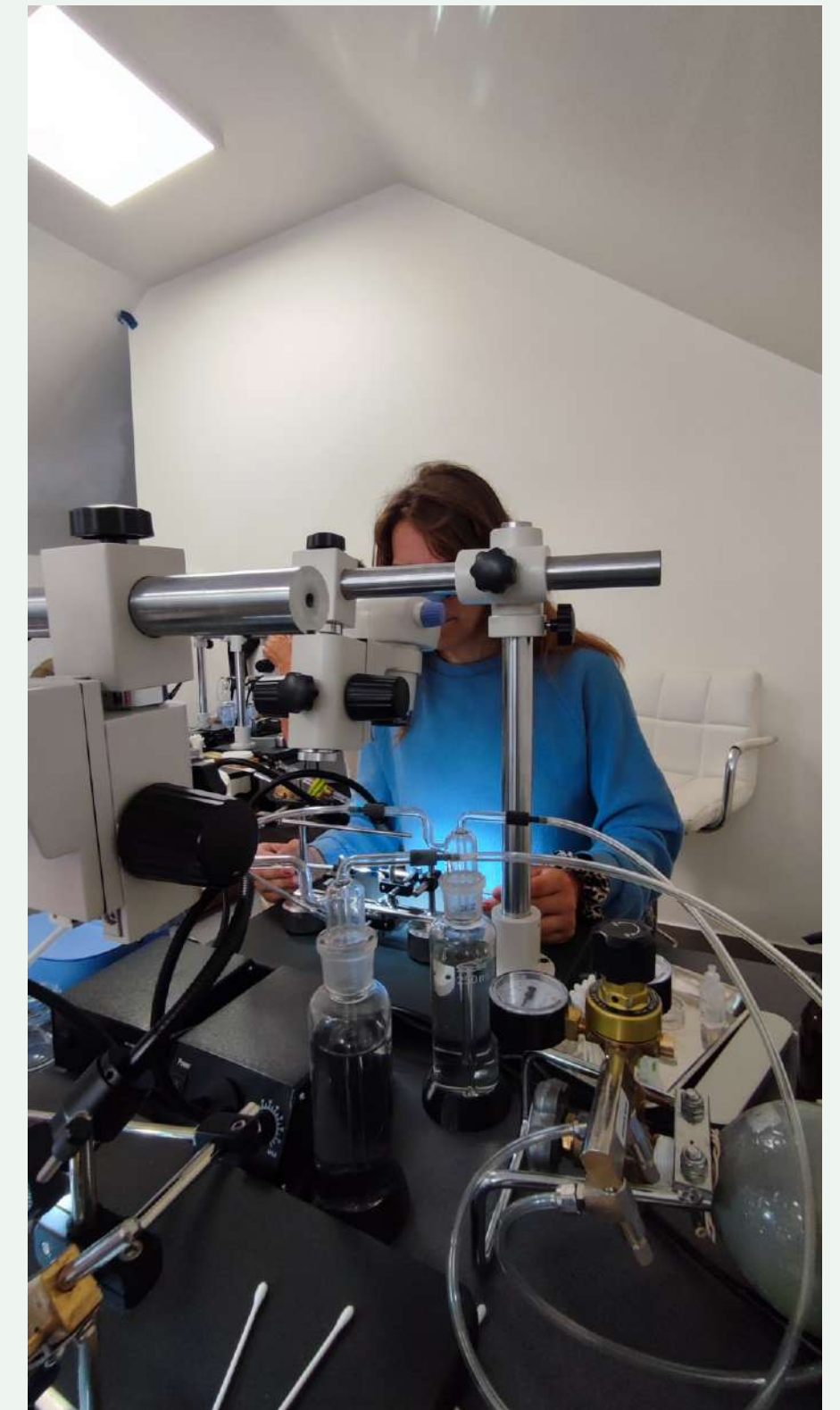
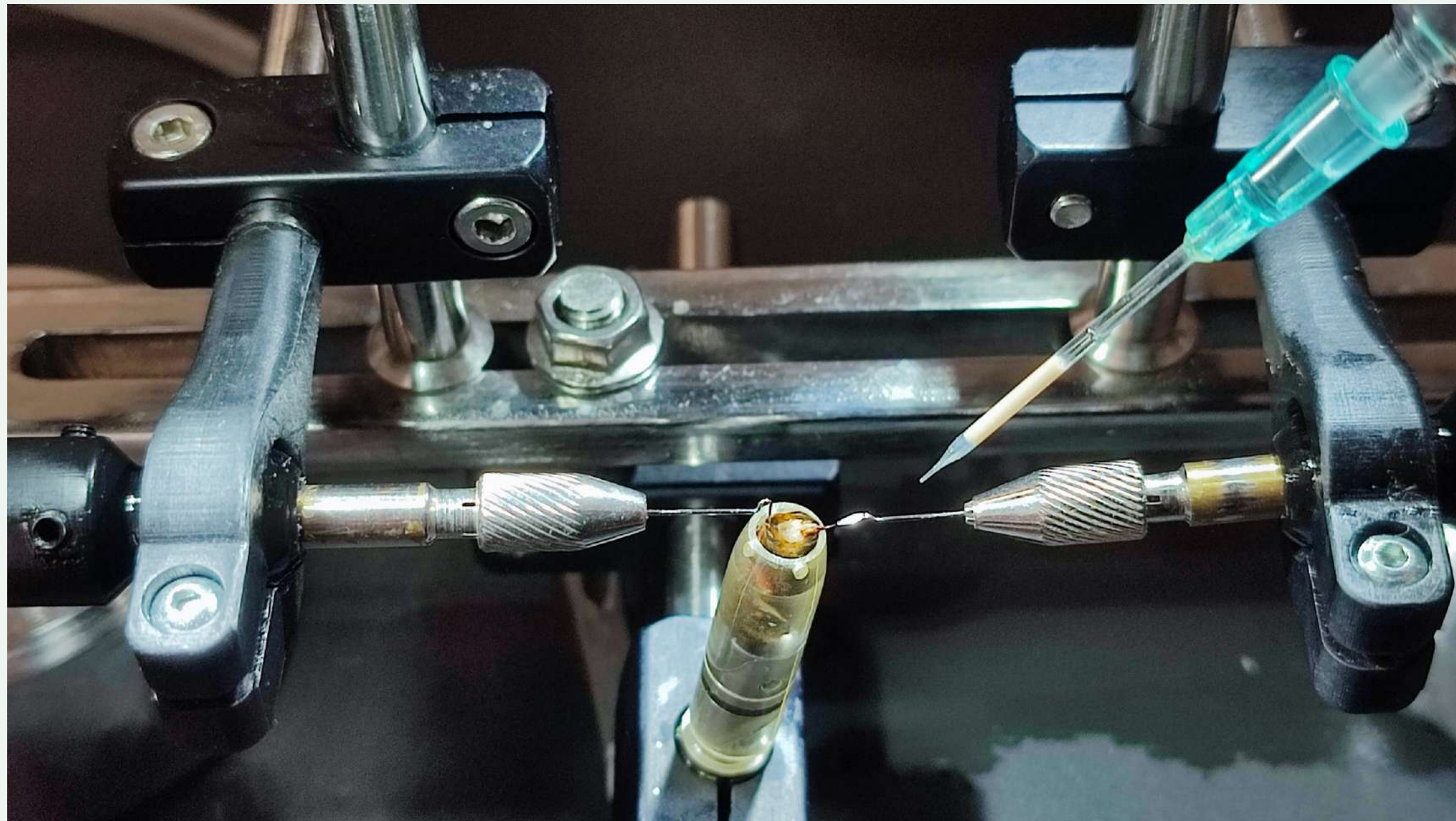


When?

- Queens beetween day 3 an 6
- Drones around day 13



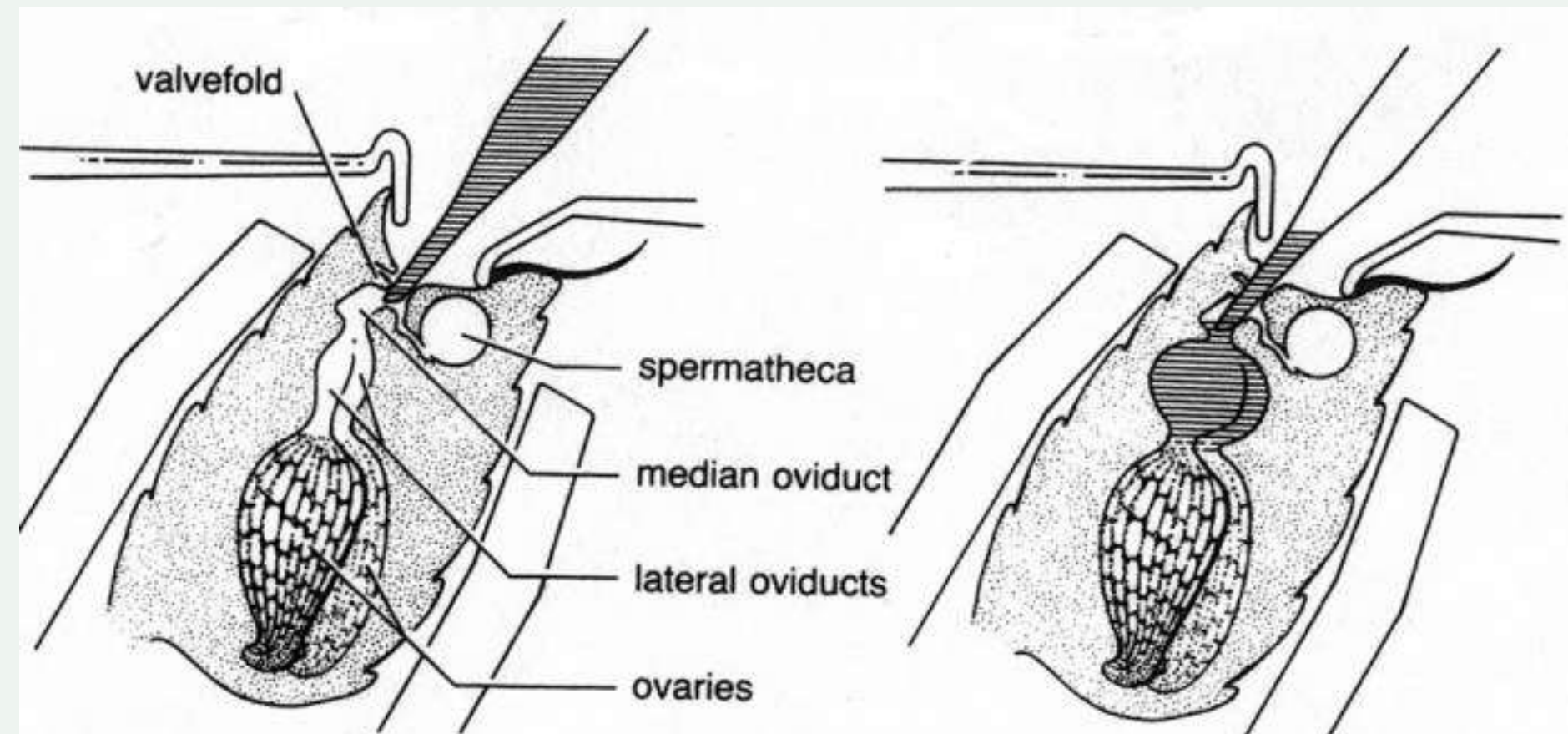
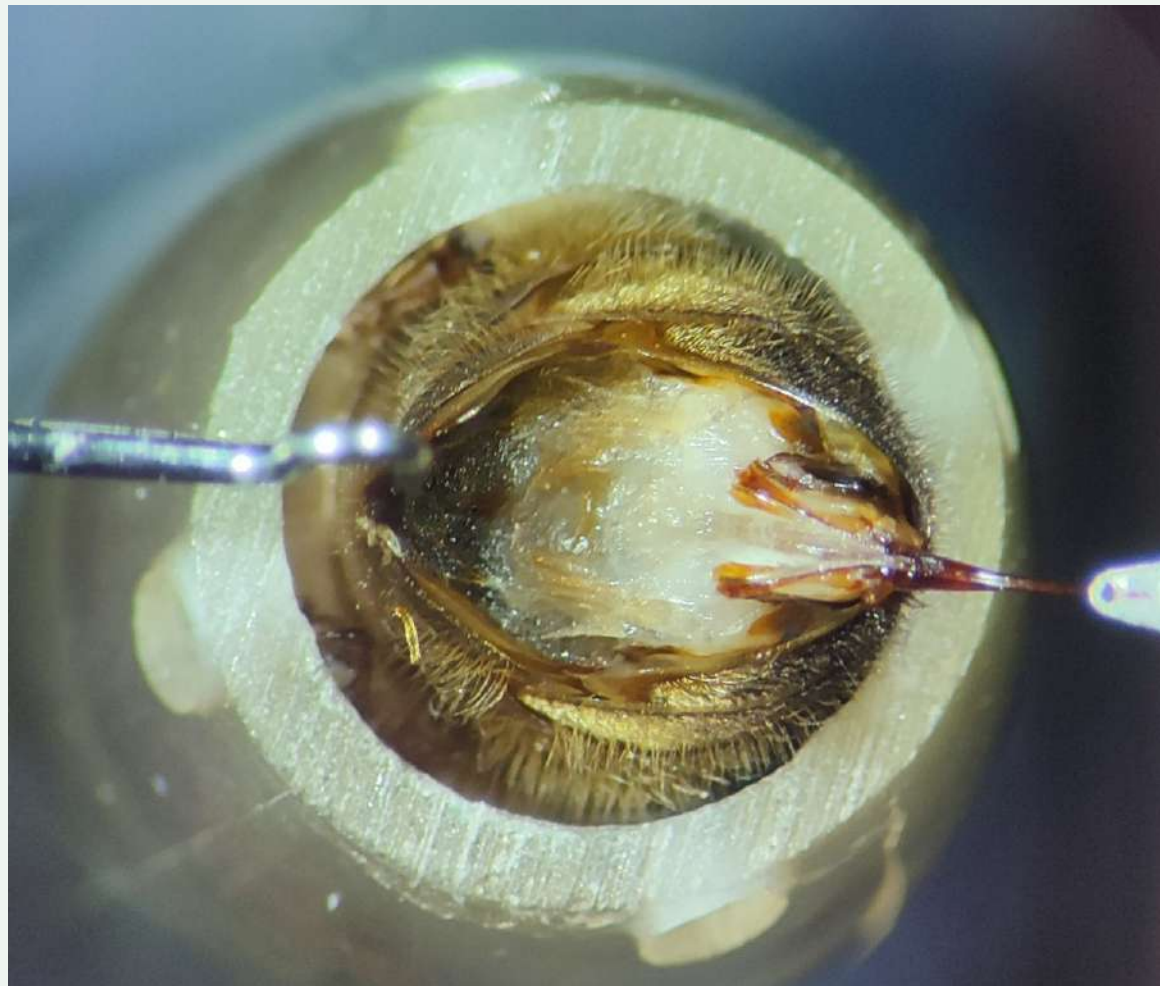
Setup



Collecting the semen



Application of semen



Start of egg laying





Thank you!

www.cost-insectimp.eu | info@cost-insectimp.eu

Follow us:

